

# IPK RENTAL KART LINE

The new rental kart concept by IPKarting

EN

*Praga*

**FORMULA K**

**OK1**  
THE ORANGE KART

**RS**



# IPK RENTAL KART LINE





# CONCEPT & MAIN FEATURES



## THE MOST ENTERTAINING RENTAL KARTS ON THE MARKET

### IN SHORT

- Aerodynamic design
- 4-stroke powertrains
- High-performance brake system

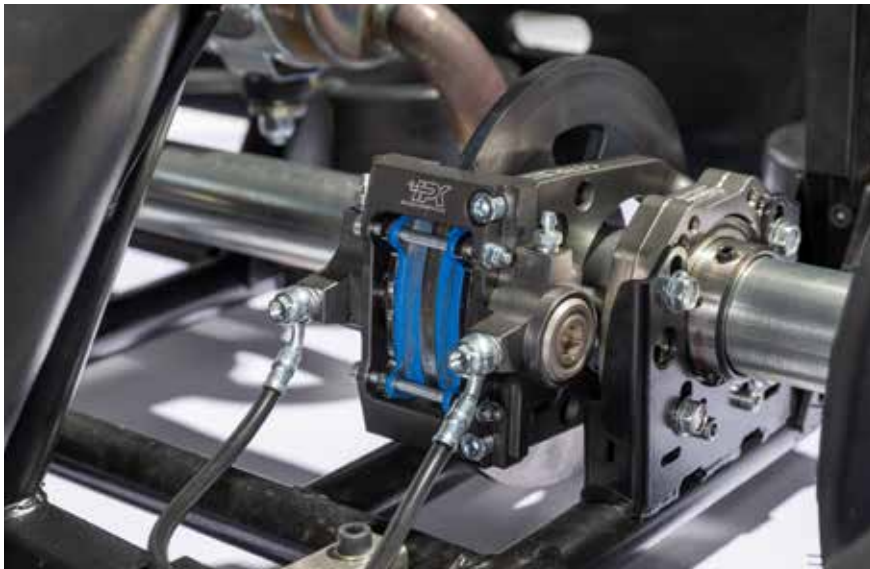
With the new IPK RENTAL KART LINE, IPKarting maintains safety and functionality at the heart of its rental offer while taking, at the same time, components and driving sensations to new levels, drawing heavily on the experience gained in the world of racing. With a record weight for the category, a look directly inspired by competition karts, numerous solutions for maximum comfort, the new rental karts by IPKarting are products that can satisfy everyone.

# CONCEPT & MAIN FEATURES



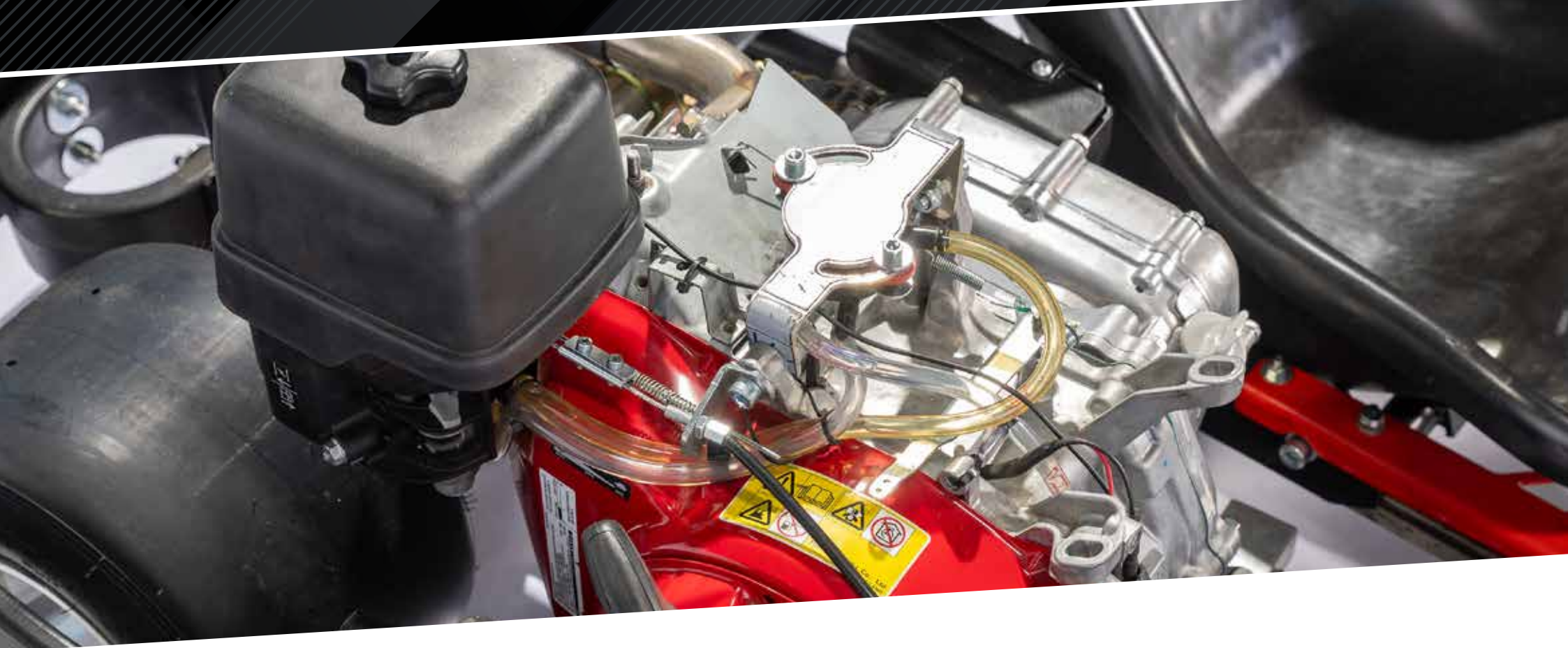


# CONCEPT & MAIN FEATURES



The rear brake consists of a radial mount aluminium monobloc caliper, equipped with two pistons and working in conjunction with a non-floating 195 mm diameter disc (155 mm diameter disc for the IPK BABY RENTAL KART's mechanical brake system), equipped with grooves on the faces to ensure uniform wear of the pads.

# CONCEPT & MAIN FEATURES



## IN SHORT

- **Only 144 kg in weight for the IPK Senior Rental Kart (equipped with the Honda GX 200 engine)**

The 4-stroke internal combustion engine makes this product a benchmark in its category. The IPK SENIOR RENTAL KART, in fact, offers excellent dynamic characteristics thanks to a project based on the philosophy of racing karts.



# CONCEPT & MAIN FEATURES

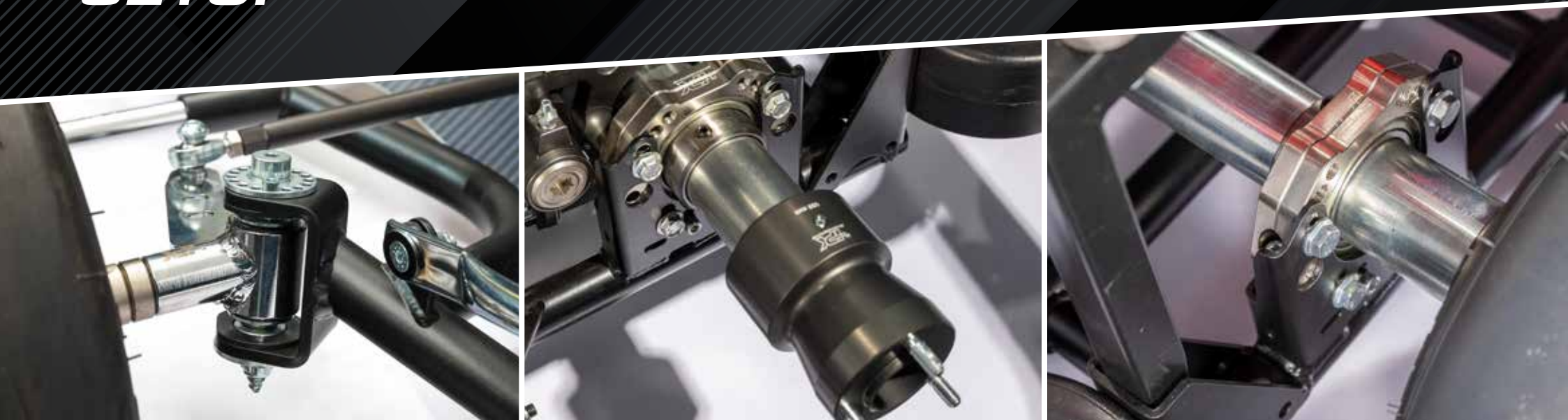


## IN SHORT

- **Low consumption of fuel and tyres**
- **Better driving sensations without getting tired**
- **32 mm diameter tubes**

Thanks to a chassis closely related in design to those used by IPKarting in the most prestigious competitions, the new IPK SENIOR RENTAL KART equipped with a 4-stroke engine manages to stop the scale's needle under 145 kg (with the Honda GX 200 engine). In the search for the maximum lightness, IPKarting technicians have certainly not forgotten about durability, equipping the frame with 32 mm diameter tubes (like all the other models, except for the IPK BABY RENTAL KART, which has 28 mm diameter tubes) and reinforcing it in the most critical areas, such as the attachment of the Cs to the chassis and the hand-welded joint where the side longerons meet the front tube of the chassis.

# ADJUSTABLE SETUP



## ***TAILORED SETUP FOR EVERY DRIVING STYLE AND TRACK***

### ***IN SHORT***

- **Camber Caster system**
- **Front height**
- **Rear height**

Another unique feature offered to the rental kart market by the IPK RENTAL KART LINE includes the wide-ranging possibilities of adjusting the setup according to the needs of tracks and drivers. The racing components found on the IPK RENTAL KARTS are a testimony to the close link between the new IPKarting rental world and the racing one. As for the setup, the ring nuts mounted on the Cs allow for a wide range of adjustments in terms of the front geometry. Additionally, there is the option of adjusting the kart's height at the front and also at the rear by appropriately placing spacers above and below the stub axles and using the screws on the rear bearing housings.



# FULL EQUIPMENT



## COMFORT AND RELIABILITY FIRST

### IN SHORT

- Adjustable seat
- Adjustable pedals
- Cut-off system

In the rental karting industry, it is important to have a product that is capable of adapting to the varying needs of customers. IPKarting knows this very well and for this reason the IPK SENIOR RENTAL KART is equipped with a seat mounted on two rails that can slide 13 cm back and forth by simply operating a lever positioned underneath the seat. The IPK MINI RENTAL KART and the IPK DOUBLE SEATER RENTAL KART feature the same system (with a fixed passenger seat on the DOUBLE SEATER model), while the IPK BABY RENTAL KART's seat can slide 9 cm back and forth thanks to a different adjustable support. The pedals, whose shape has been designed to prevent the foot from slipping, are equipped with a component that can be rotated to allow them to be 8 cm closer or further away (just like the pedals of the IPK MINI RENTAL KART, while the ones of the IPK BABY RENTAL KART have a 10-cm range and the IPK DOUBLE SEATER's pedals and pedal board are fixed). There is also no shortage of solutions to increase the longevity of the vehicle and its components, such as the "cut-off" system, which prevents drivers from accelerating and braking at the same time: a feature that has a direct impact on the budget of rental kart operators. The steering rods are made of Teflon, a material that is resistant to jolts and stresses and is also used for the steering's end stroke. We are speaking of inserts fastened to the sides of the chassis longerons where the stub axles end their rotation.

# FULL EQUIPMENT





# SAFETY ON TOP



**PATENTED SYSTEM**

## PERIMETER PROTECTION

**IN SHORT**

- Shock absorption system
- All-around bumpers
- Non-slip pedals

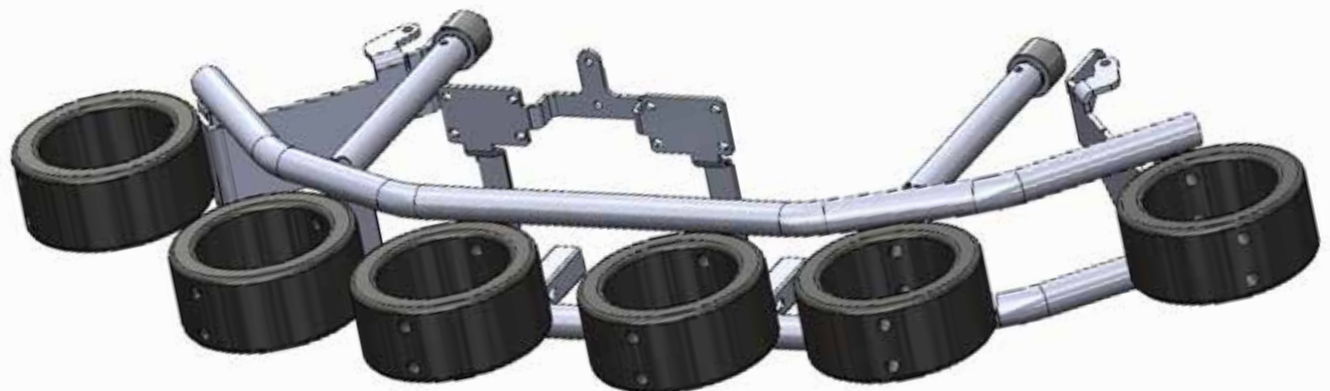
For the IPK RENTAL KART LINE, IPKarting has designed a perimetral fairing that surrounds the entire kart, while the curved inserts placed between the fairing and the chassis (present on the SENIOR, MINI and DOUBLE SEATER models) have the task of absorbing the impacts or jolts to protect the driver. There is also a new front protection for the IPK SENIOR RENTAL KART: a steel structure, added to the patented elastic rings, improves impact absorption at the front of the Rental kart and reduces the risk of breakage in a critical area of the chassis. The pedals have been designed with a shape that prevents the foot from sliding off the optimal position, thus avoiding the potential loss of control of the kart.

# **PERIMETER PROTECTION**



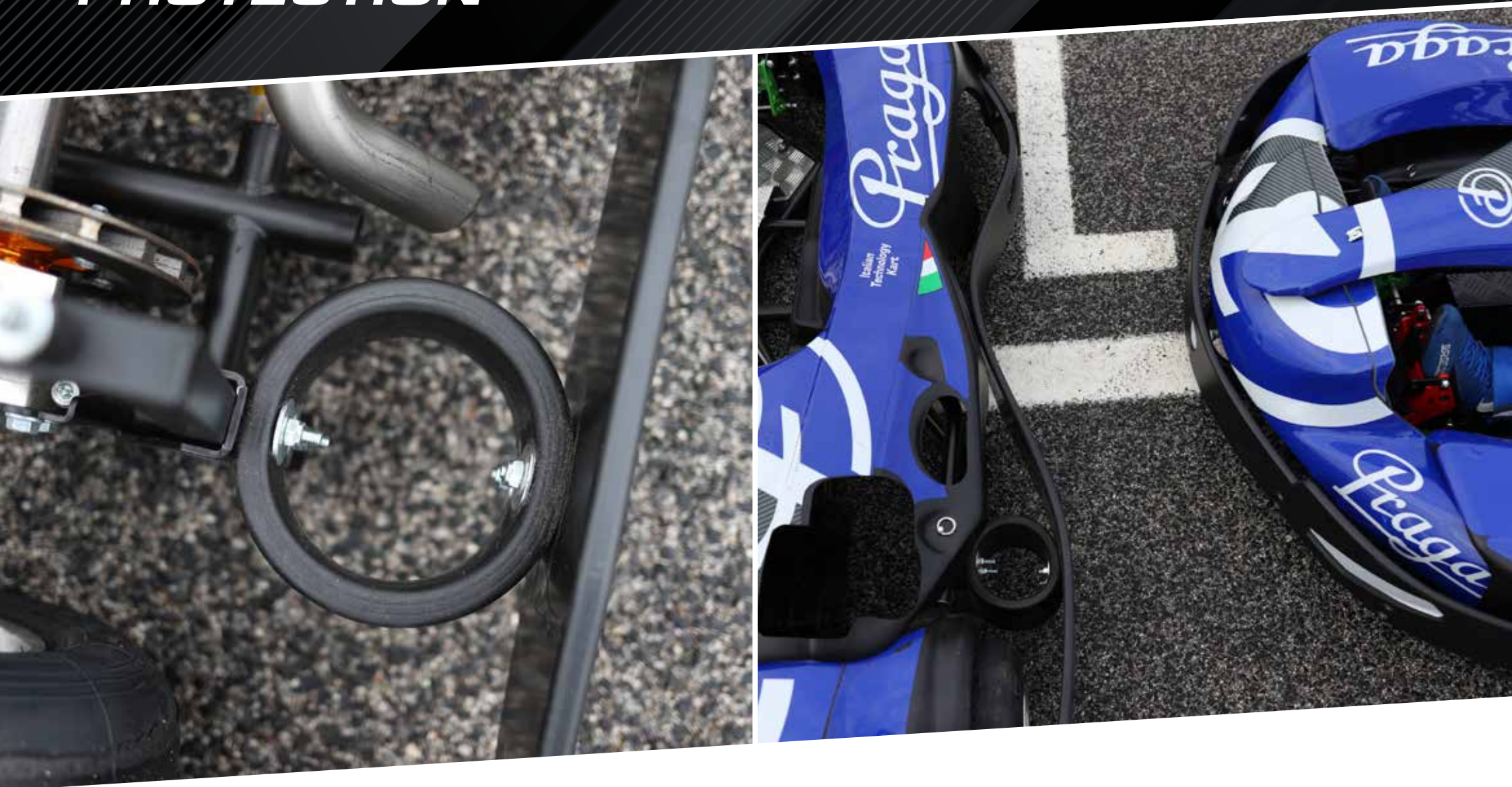
**PATENTED SYSTEM**

**IPK SENIOR  
RENTAL KART  
NEW FRONT  
PROTECTION**





# PERIMETER PROTECTION



# **EASY MAINTENANCE**



## **FAST AND WORRY-FREE MANAGEMENT**

---

### **IN SHORT**

- **Easy bodywork removal**
- **Easy tyre changing**

Great care has been dedicated to facilitating maintenance operations, thanks to the openings in the perimetral fairing that allow for a quick replacement of the tyres without having to disassemble any components of the kart. The cover, which prevents drivers from coming into contact with moving parts, consists of only 3 pieces and can be removed and repositioned in a few simple moves thanks to only 9 easily accessible quick-release screws. Even the application of the chain grease, an ordinary operation to be carried out frequently, is simple and does not involve any disassembly.



# OPTIONAL FEATURES



## AN ANSWER TO ALL REQUESTS

### IN SHORT

- Seat belts\*
- Roll bar\*
- Belt or chain transmission

\* These features vary depending on the model.



# VERSIONS



## **IPK SENIOR RENTAL KART**



## **IPK MINI RENTAL KART**



## **IPK BABY RENTAL KART**



## **IPK DOUBLE SEATER RENTAL KART**





# VERSIONS



## IPK SENIOR RENTAL KART



---

**Weight**

144 kg (with Honda GX 200 engine)

---

**Frame**

Ø32 mm

---

**Brake system**

Hydraulic, Ø195 mm disc

---

**Brake position**

Rear

---

**Axle**

Ø50 x 2 mm hard and galvanised

---

**Protection**

Perimeter guard with dual impact absorption system (patented by IPK)

---

**Black bodywork**

507 nassau panel and 506 front spoiler derived from Racing karts  
Side fairings and rear bumper internally designed by IPK

---

**Steering wheel**

FASTER Ø320 mm  
RENTAL X350 Ø350 mm (optional)

---

**Tank capacity**

8.5 L

---

**Wheels**

Reinforced aluminium 130 mm (front) and 180 mm (rear)

---

**Seat**

Adjustable (13 cm sliding range)  
Sizes: XL and XXL

---

**Pedals**

Adjustable (8 cm range)

---

**Spindles**

Ø25 mm reinforced

---

**Engine**

Tillotson  
Honda GX 200 / GX 270 / GX 390

# VERSIONS



## IPK MINI RENTAL KART



---

**Weight**

130 kg (excluding engine)

---

**Frame**

Ø32 mm

---

**Brake system**

Hydraulic, Ø195 mm disc

---

**Brake position**

Rear

---

**Axle**

Ø50 x 2 mm hard and galvanised

---

**Protection**

Perimeter guard with dual impact absorption system (patented by IPK)

---

**Black bodywork**

MK20 nassau panel and 506 front spoiler derived from Racing karts  
Side fairings and rear bumper internally designed by IPK

---

**Steering wheel**

FASTER Ø320 mm  
RENTAL X350 Ø350 mm (optional)

---

**Tank capacity**

4.5 L

---

**Wheels**

Reinforced aluminium 130 mm (front) and 180 mm (rear)

---

**Seat**

Adjustable (13 cm sliding range)  
Sizes: XL and XXL

---

**Pedals**

Adjustable (8 cm range)

---

**Spindles**

Ø25 mm reinforced

---

**Engine**

Tillotson  
Honda GX 120 / GX 160 / GX 200



# VERSIONS



## IPK BABY RENTAL KART



---

**Weight**

50 kg (excluding engine)

---

**Frame**

Ø28 mm

---

**Brake System**

Mechanical, Ø155 mm disc

---

**Brake position**

Rear

---

**Axle**

Ø30 x 5 mm

---

**Protection**

Wheel covers

---

**Black bodywork**

MK14 nassau panel and front spoiler  
PUFFO side fairings and HULK rear  
bumper

---

**Steering wheel**

FASTER Ø320 mm  
RENTAL X350 Ø350 mm (optional)

---

**Tank capacity**

0.63 L with the Honda GX35 engine

---

**Wheels**

Aluminium 115 mm (front)  
and 140 mm (rear)

---

**Seat**

Adjustable (9 cm sliding range)  
PUFFO size

---

**Pedals**

Adjustable (10 cm range)

---

**Spindles**

Ø17 mm

---

**Engine**

Honda GX35

# VERSIONS



## IPK DOUBLE SEATER RENTAL KART



---

**Weight**

165 kg (excluding engine)

---

**Frame**

Ø32 mm

---

**Brake system**

Hydraulic, Ø195 mm disc

---

**Brake position**

Rear

---

**Axle**

Ø50 x 2 mm hard and galvanised

---

**Protection**

Perimeter guard with dual impact absorption system (patented by IPK)

---

**Black bodywork**

506 nassau panel and front spoiler derived from Racing karts  
Side fairings and rear bumper internally designed by IPK

---

**Steering wheel**

FASTER Ø320 mm  
RENTAL X350 Ø350 mm (optional)

---

**Tank capacity**

5.3 L (Honda GX270 engine)  
or 6.1 L (Honda GX390 engine)

---

**Wheels**

Reinforced aluminium 130 mm (front) and 180 mm (rear)

---

**Seats**

Adjustable (13 cm sliding range)  
Fixed passenger side – Sizes: XL and XXL

---

**Pedals and pedal board**

Fixed

---

**Spindles**

Ø25 mm reinforced

---

**Engine**

Tillotson  
Honda GX 200 / GX 270 / GX 390



# VERSIONS



***CUSTOM DESIGN***



**A GROUP DEDICATED  
TO KARTING**



**IPK BRANDS**



*Praga*



**F**  
**FORMULA K**



**A GROUP DEDICATED  
TO KARTING**



**IPK BRANDS**



**O1**  
**THE ORANGE KART**



**RS**

# **A GROUP DEDICATED TO KARTING**



## **A 360° OFFER FOR THOSE WHO WANT TO MAKE A BUSINESS OUT OF KARTING**

### **IN SHORT**

- Racing kart
- Racing team
- Sportswear





# A GROUP DEDICATED TO KARTING





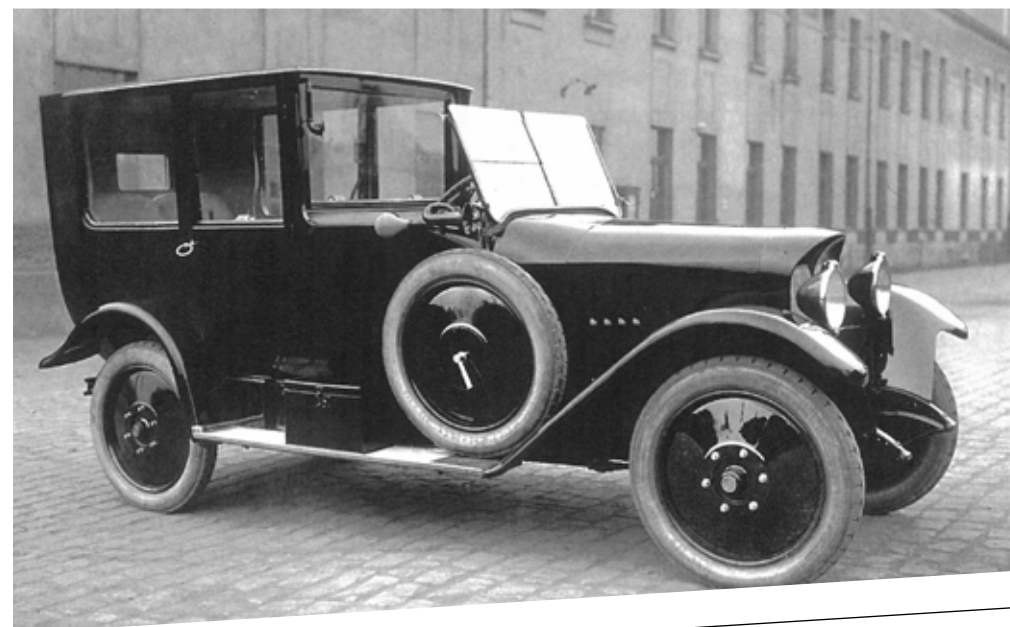
## OVER 100 YEARS IN THE WORLD OF ENGINES

---

### IN SHORT

- Over 100 years of history
- Praga R1
- Praga Alfa

*Praga*





# IPK RENTAL KART LINE



***ipkarting.com***

*Praga*

**F**  
**FORMULA K**

**OK1**  
THE ORANGE KART

**RS**

**IPKarting s.r.l.**

Via Preon, 141

37056 - Salizzole (VR) Italy

info@ipkarting.com

T. +39 045 6901065

